



# REVOLVING DOORS

ALUMINUM • BRONZE • STAINLESS STEEL • NICKEL SILVER

\* FEATURING . . .

- ADJUSTABLE WEATHERSTRIPPING
- AUTOMATIC COLLAPSIBLE PANIC PROOF MECHANISM
- AUTOMATIC SPEED CONTROL
- TAMPERPROOF ADJUSTMENTS
- TROLLEY WITH AUTOMATIC LOCKING DEVICE
- ADJUSTABLE PANIC BOLT ARRANGEMENT TO MEET VARIABLE WIND PRESSURES

**GENERAL BRONZE CORPORATION**

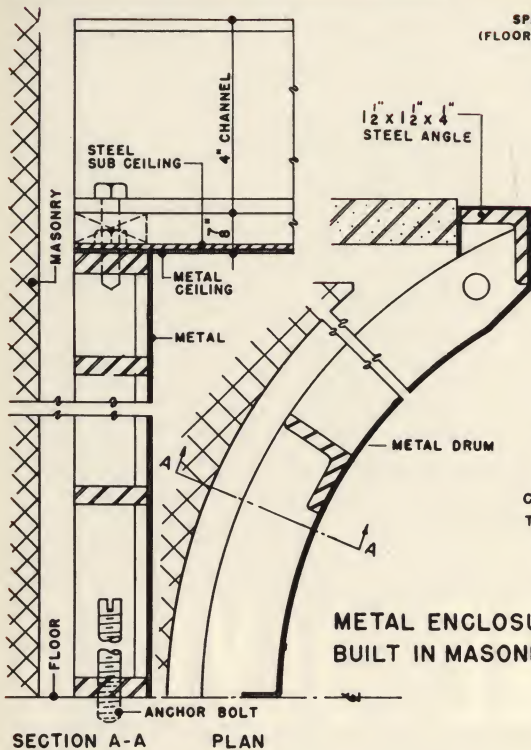
711 STEWART AVENUE, GARDEN CITY, L. I., N. Y.

District Offices: 3849 W. Lake Street, Chicago; 100 Park Avenue, New York

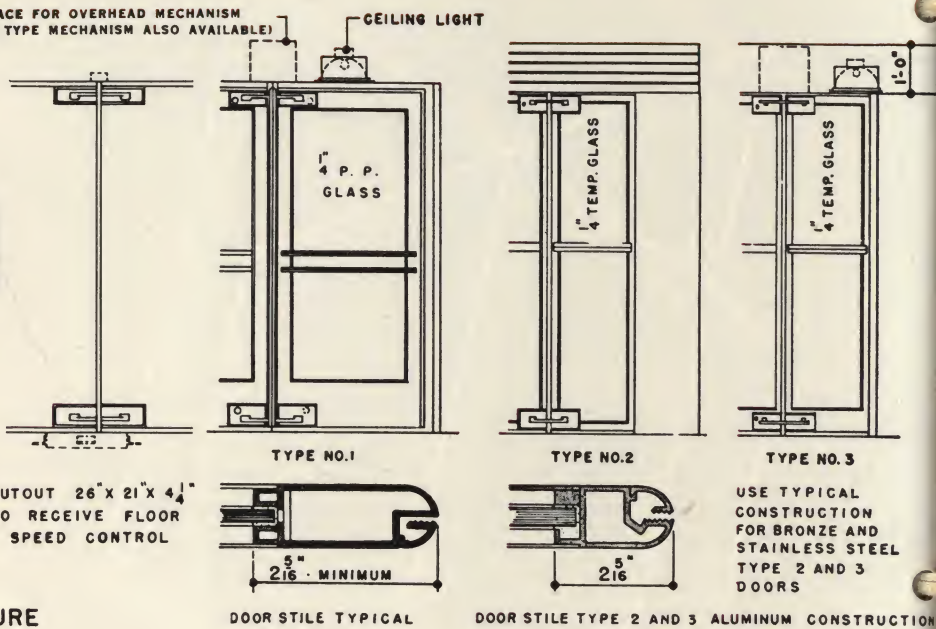


1960

# General Details



SPACE FOR OVERHEAD MECHANISM  
(FLOOR TYPE MECHANISM ALSO AVAILABLE)



METAL ENCLOSURE  
BUILT IN MASONRY

CUTOUT 26" X 21" X 4 1/4"  
TO RECEIVE FLOOR  
SPEED CONTROL

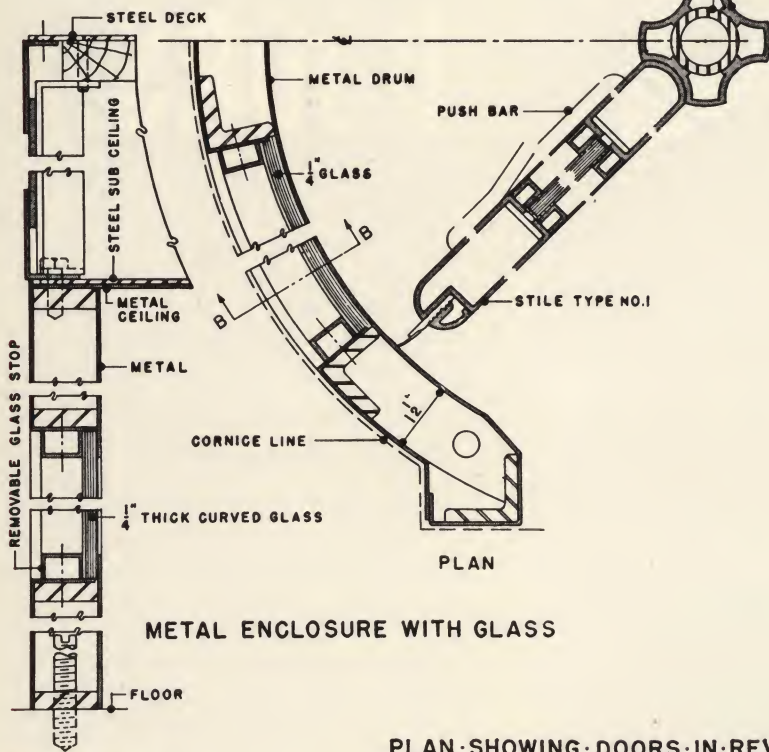
USE TYPICAL  
CONSTRUCTION  
FOR BRONZE AND  
STAINLESS STEEL  
TYPE 2 AND 3  
DOORS

DOOR STILE TYPICAL

DOOR STILE TYPE 2 AND 3 ALUMINUM CONSTRUCTION

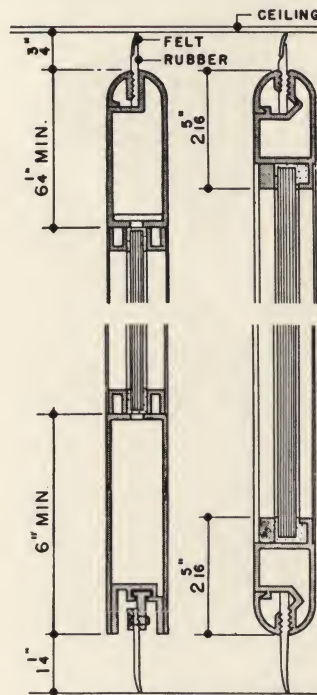
SECTION A-A PLAN

METAL COVER  
STEEL SHAFT



METAL ENCLOSURE WITH GLASS

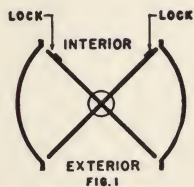
SECTION B-B



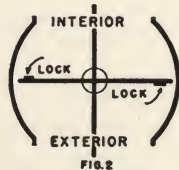
USE TYPICAL  
CONSTRUCTION  
FOR BRONZE AND  
STAINLESS STEEL  
TYPE 2 AND 3  
DOORS

VERTICAL SECTIONS  
TYPICAL TYPE 2 ALUMINUM  
" 3 " WITH 6" BASE

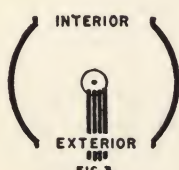
PLAN SHOWING DOORS IN REVOLVING; LOCKING AND FOLDING POSITIONS.



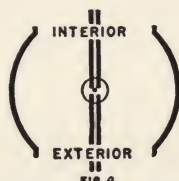
REVOLVING AND LOCKING POSITIONS.



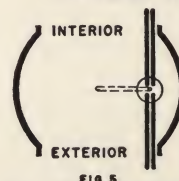
REVOLVING AND LOCKING POSITIONS.



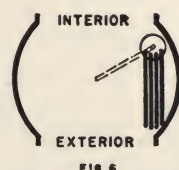
FULL PANIC COLLAPSED POSITION.



CENTRAL OPEN POSITION.



FULL OPEN SIDE POSITION.  
DOORS ARE FOLDED IN PAIRS.



FULL OPEN SIDE POSITION.  
DOORS ARE FOLDED IN  
BOOK FASHION.

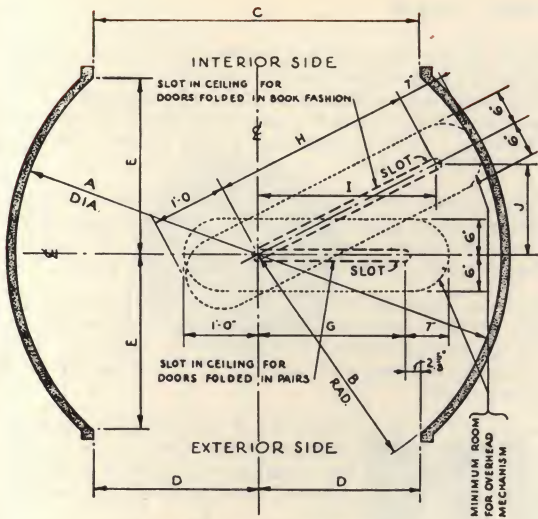
FIG. 5 AND FIG. 6  
OVERHEAD SPEED CONTROL ONLY

**GENERAL BRONZE CORPORATION**

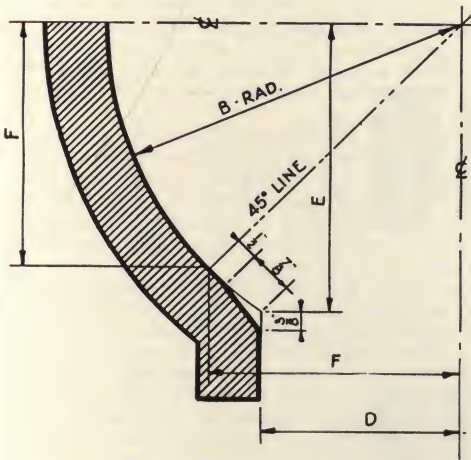
711 STEWART AVENUE

GARDEN CITY, L. I., N. Y.

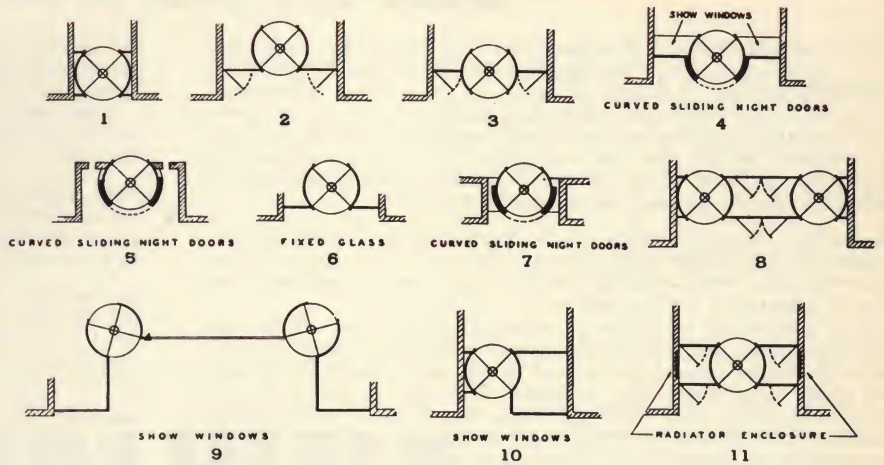




STANDARD DIMENSIONS FOR ENCLOSURE AND CEILING SLOT



ENLARGED PORTION OF DRUM SHOWING STANDARD DIMENSIONS



REVOLVING DOOR LAYOUT SUGGESTIONS

TABLE OF DIMENSIONS

A	B	C	D	E	F	G	H	I	J
5'- 6"	2'- 9"	3'- 8 <sup>3</sup> / <sub>4</sub> "	1'-10 <sup>3</sup> / <sub>8</sub> "	2'- 0 <sup>1</sup> / <sub>4</sub> "	1'-11 <sup>1</sup> / <sub>2</sub> "	1'- 7 <sup>3</sup> / <sub>4</sub> "	2'- 2 <sup>3</sup> / <sub>4</sub> "	1'-11 <sup>5</sup> / <sub>8</sub> "	1'-0 <sup>1</sup> / <sub>2</sub> "
5'- 8"	2'-10"	3'-10 <sup>1</sup> / <sub>8</sub> "	1'-11 <sup>1</sup> / <sub>8</sub> "	2'- 1"	2'- 0 <sup>1</sup> / <sub>2</sub> "	1'- 8 <sup>1</sup> / <sub>4</sub> "	2'- 3 <sup>3</sup> / <sub>4</sub> "	2'- 0 <sup>1</sup> / <sub>2</sub> "	1'-1"
5'-10"	2'-11"	3'-11 <sup>1</sup> / <sub>2</sub> "	1'-11 <sup>3</sup> / <sub>4</sub> "	2'- 1 <sup>1</sup> / <sub>8</sub> "	2'- 0 <sup>3</sup> / <sub>4</sub> "	1'- 9 <sup>1</sup> / <sub>8</sub> "	2'- 4 <sup>3</sup> / <sub>4</sub> "	2'- 1 <sup>3</sup> / <sub>8</sub> "	1'-1 <sup>1</sup> / <sub>2</sub> "
6'- 0"	3'- 0"	4'- 0 <sup>7</sup> / <sub>8</sub> "	2'- 0 <sup>7</sup> / <sub>16</sub> "	2'- 2 <sup>7</sup> / <sub>16</sub> "	2'- 1 <sup>1</sup> / <sub>32</sub> "	1'- 9 <sup>13</sup> / <sub>16</sub> "	2'- 5 <sup>3</sup> / <sub>4</sub> "	2'- 2 <sup>1</sup> / <sub>4</sub> "	1'-2"
6'- 2"	3'- 1"	4'- 2 <sup>3</sup> / <sub>8</sub> "	2'- 1 <sup>1</sup> / <sub>16</sub> "	2'- 3 <sup>1</sup> / <sub>8</sub> "	2'- 2 <sup>5</sup> / <sub>32</sub> "	1'-10 <sup>1</sup> / <sub>16</sub> "	2'- 6 <sup>3</sup> / <sub>4</sub> "	2'- 3 <sup>1</sup> / <sub>8</sub> "	1'-2 <sup>1</sup> / <sub>2</sub> "
6'- 4"	3'- 2"	4'- 3 <sup>3</sup> / <sub>4</sub> "	2'- 1 <sup>7</sup> / <sub>8</sub> "	2'- 3 <sup>1</sup> / <sub>2</sub> "	2'- 2 <sup>7</sup> / <sub>8</sub> "	1'-11 <sup>1</sup> / <sub>4</sub> "	2'- 7 <sup>3</sup> / <sub>4</sub> "	2'- 4"	1'-3"
6'- 6"	3'- 3"	4'- 5 <sup>1</sup> / <sub>8</sub> "	2'- 2 <sup>1</sup> / <sub>8</sub> "	2'- 4 <sup>1</sup> / <sub>8</sub> "	2'- 3 <sup>1</sup> / <sub>32</sub> "	1'-11 <sup>1</sup> / <sub>8</sub> "	2'- 8 <sup>3</sup> / <sub>4</sub> "	2'- 4 <sup>7</sup> / <sub>8</sub> "	1'-3 <sup>1</sup> / <sub>2</sub> "
6'- 8"	3'- 4"	4'- 6 <sup>5</sup> / <sub>8</sub> "	2'- 3 <sup>1</sup> / <sub>16</sub> "	2'- 5 <sup>1</sup> / <sub>4</sub> "	2'- 4 <sup>3</sup> / <sub>32</sub> "	2'- 0 <sup>1</sup> / <sub>16</sub> "	2'- 9 <sup>3</sup> / <sub>4</sub> "	2'- 5 <sup>3</sup> / <sub>4</sub> "	1'-4"
6'-10"	3'- 5"	4'- 8"	2'- 4"	2'- 5 <sup>5</sup> / <sub>16</sub> "	2'- 5"	2'- 1 <sup>3</sup> / <sub>8</sub> "	2'-10 <sup>3</sup> / <sub>4</sub> "	2'- 6 <sup>5</sup> / <sub>8</sub> "	1'-4 <sup>1</sup> / <sub>2</sub> "
7'- 0"	3'- 6"	4'- 9 <sup>1</sup> / <sub>2</sub> "	2'- 4 <sup>3</sup> / <sub>4</sub> "	2'- 6 <sup>5</sup> / <sub>8</sub> "	2'- 5 <sup>1</sup> / <sub>16</sub> "	2'- 2 <sup>1</sup> / <sub>8</sub> "	2'-11 <sup>3</sup> / <sub>4</sub> "	2'- 7 <sup>1</sup> / <sub>2</sub> "	1'-5"
7'- 2"	3'- 7"	4'-10 <sup>7</sup> / <sub>8</sub> "	2'- 5 <sup>1</sup> / <sub>16</sub> "	2'- 7 <sup>3</sup> / <sub>8</sub> "	2'- 6 <sup>1</sup> / <sub>32</sub> "	2'- 2 <sup>1</sup> / <sub>16</sub> "	3'- 0 <sup>3</sup> / <sub>4</sub> "	2'- 8 <sup>5</sup> / <sub>8</sub> "	1'-5 <sup>1</sup> / <sub>2</sub> "
7'- 4"	3'- 8"	5'- 0 <sup>1</sup> / <sub>4</sub> "	2'- 6 <sup>1</sup> / <sub>8</sub> "	2'- 8 <sup>1</sup> / <sub>16</sub> "	2'- 7 <sup>3</sup> / <sub>16</sub> "	2'- 3 <sup>1</sup> / <sub>2</sub> "	3'- 1 <sup>3</sup> / <sub>4</sub> "	2'- 9 <sup>3</sup> / <sub>8</sub> "	1'-6"
7'- 6"	3'- 9"	5'- 1 <sup>5</sup> / <sub>8</sub> "	2'- 6 <sup>1</sup> / <sub>16</sub> "	2'- 8 <sup>1</sup> / <sub>16</sub> "	2'- 7 <sup>1</sup> / <sub>16</sub> "	2'- 4 <sup>1</sup> / <sub>8</sub> "	3'- 2 <sup>3</sup> / <sub>4</sub> "	2'-10 <sup>1</sup> / <sub>16</sub> "	1'-6 <sup>1</sup> / <sub>2</sub> "
7'- 8"	3'-10"	5'- 3"	2'- 7 <sup>1</sup> / <sub>2</sub> "	2'- 9 <sup>1</sup> / <sub>2</sub> "	2'- 8 <sup>1</sup> / <sub>32</sub> "	2'- 4 <sup>7</sup> / <sub>8</sub> "	3'- 3 <sup>3</sup> / <sub>4</sub> "	2'-10 <sup>5</sup> / <sub>16</sub> "	1'-7"
7'-10"	3'-11"	5'- 4 <sup>1</sup> / <sub>2</sub> "	2'- 8 <sup>1</sup> / <sub>4</sub> "	2'-10 <sup>3</sup> / <sub>16</sub> "	2'- 9 <sup>1</sup> / <sub>4</sub> "	2'- 5 <sup>5</sup> / <sub>8</sub> "	3'- 4 <sup>3</sup> / <sub>4</sub> "	2'-11 <sup>1</sup> / <sub>16</sub> "	1'-7 <sup>1</sup> / <sub>2</sub> "
8'- 0"	4'- 0"	5'- 5 <sup>3</sup> / <sub>8</sub> "	2'- 8 <sup>1</sup> / <sub>16</sub> "	2'-10 <sup>7</sup> / <sub>8</sub> "	2'- 9 <sup>1</sup> / <sub>16</sub> "	2'- 6 <sup>5</sup> / <sub>16</sub> "	3'- 5 <sup>3</sup> / <sub>4</sub> "	3'- 0 <sup>5</sup> / <sub>8</sub> "	1'-8"



# REVOLVING DOOR SPECIFICATIONS

## ALUMINUM, BRONZE, STAINLESS STEEL AND NICKEL SILVER

**Scope:** Furnish and install where shown on drawings, Type No. .... revolving doors as manufactured by GENERAL BRONZE CORPORATION of Garden City, L. I., New York. The wings are to be of full automatic collapsible, panic-proof type, equipped with operating mechanism and speed regulator to control speed of rotation. Include circular enclosure, flat ceiling, cornice, (if required) revolving wings, hardware, glass, complete mechanism including speed regulator, as hereinafter specified.

**Mechanism:** The mechanism of the revolving door shall be full automatic collapsible, panic-proof, braceless type. Each of the four revolving wings shall be held in their normal rotating position by hangers at the top and bottom of the wings.

The mechanism shall be so constructed that the wings will fold from their revolving position to a wide open panic position instantly, when forces are exerted in opposite directions on any two wings. The wings thus collapsed shall fold on each other, in the line of egress. The tension holding the wings in their normal rotating position shall be readily adjustable to provide a collapsing pressure of from 60 to 175 pounds when applied at any point 42 inches or more from the floor on the outer stiles of two wings. Provision shall be made for varying such adjustment quickly without dismantling any of the hardware or fixtures.

The mechanism shall also permit the wings to be folded manually in a central open position, in pairs; in a full open side position, in pairs; and in a central position with the four wings folded like a book. A simple manual release of the tension holding the wings in normal rotating position shall be provided to permit manual collapsing or folding of the wings without exerting the pressure needed for automatic collapsing of the wings. Each wing shall have self-contained in the supporting hardware a simple automatic device or a simple readily removable device to hold the wings in position when folded in pairs—this to hold the folded wings firmly in balanced position for rolling to the side of the enclosure and to retain them in that position until released.

The center shaft carrying the wings shall be supported overhead by a ball bearing in a universal mounting carried on a four wheel trolley which, in turn, is set on a steel track to permit the wings to be moved to the side of the enclosure when folded. This center shaft shall be held in position by a locking device in the overhead track and by a socket and pivot bolt in the floor. The bottom pivot shall not rotate in the floor socket.

The raising of the bottom pivot shall release the center shaft at both top and bottom, freeing it for movement to the side of the enclosure. Or this same action may be accomplished by raising the floor pivot and tilting the doors slightly from their perpendicular position.

**Hardware:** Hardware shall include keylocks and bronze push bars as shown. All locks to be keyed alike, and masterkeyed (if desired).

**Speed Regulator:** The speed of rotation shall be controlled by a mechanical device to be installed in the overhead mechanism chamber in conjunction with the standard trolley. This device shall permit free rotation of the revolving wings up to any pre-

determined rate of speed, but prevent spinning at uncontrolled speed. An adjustment shall be provided to regulate the maximum speed to meet the particular traffic needs of each entrance.

*Optional—Speed regulator shall be placed in floor. Regulator in this position will not permit shaft and wings to be moved to the side of the enclosure.*

**Glass:** Glass, excepting that for ceiling lights, shall be first quality ¼-inch thick polished plate glass. (If required in enclosure walls, the glass shall be accurately bent to radius.) Glass for ceiling lights shall be best quality ¼-inch thick frosted sheet glass.

**Ceiling Lights:** Provision shall be made in each revolving door ceiling for two flush lights, each having a removable glass cover. This work shall include reflector and reflector housing. The electric wiring, fittings, fixtures and lamps will be furnished and installed by another trade.

**Material:** Stiles and rails of wings shall be of tubular construction of not less than 12 B & S gauge thickness for bronze and nickel silver, 8 B & S gauge thickness for aluminum and 14 U.S. gauge thickness for stainless steel of selected quality without serious defects, free from twists and dents.

Joints shall be carefully machined. Corners and intersections shall be reinforced, carefully welded and finished to an even surface. Cut-outs to accommodate hardware and operating mechanism shall be properly reinforced, accurately formed and closely fitted to receive the hardware. Removable glass stops shall conform to detail, carefully mitred and fitted at corners and secured with oval head countersunk machine screws of composition to match color of balance of material. Screws to be equally spaced approximately 10 inches on centers.

Provide weather stripping in the stiles of the wings engaging the enclosure, the top rails and bottom rails. The weather stripping is to be manufactured of pliable rubber with sewed on woven felt contacts except at the bottom rail where the rubber is to contact the floor. The weather stripping is to be secured in place by holding devices which will permit convenient adjustment and replacement without dismantling the wings.

The enclosure shall be of not less than 12 B & S gauge thickness for bronze and nickel silver, 10 B & S gauge thickness for aluminum and 14 U.S. gauge thickness for stainless steel. Sheet metal must be of first quality, patent leveled, free from dents and serious defects. Provide for each enclosure a complete skeleton frame of heavy steel, formed to a radius and reinforced with continuous vertical steel supports, welded at intersections to a complete unit and painted with heavy bitumastic paint to prevent electrolytic action between steel and other material.

Sheet metal shall be formed to radius or shape required by design, carefully machined, fitted, reinforced and secured to the steel construction by means of machine screws or spot welding as may be required. Provide cut-out in the ceiling to receive ceiling light. Where enclosures are fully built-in, provide a carefully fitted flush-hinged panel in each ceiling for access to overhead mechanism. Provide automatic cover to close opening in ceiling when wings are in operation. Exposed surfaces are to be finished to the required texture and colored as desired by architects or owners.

## TYPICAL INSTALLATIONS OF GENERAL BRONZE REVOLVING DOORS

Hartford Hospital.....	Hartford, Conn.	Deering Milliken & Co. Inc.....	New York, N. Y.
Department of Justice Building.....	Washington, D. C.	Rockefeller Center Buildings.....	New York, N. Y.
LaSalle National Bank.....	Chicago, Illinois	Supreme Court.....	Brooklyn, N. Y.
Scottish Rite Temple.....	Covington, Kentucky	United Nations Secretariat.....	New York, N. Y.
Commercial Credit.....	Baltimore, Maryland	Union National Bank.....	Troy, N. Y.
National Institute of Health.....	Bethesda, Maryland	Department of Justice.....	Raleigh, N. C.
Chrysler Engineering Building 130.....	Highland Park, Mich.	Toledo Museum of Art.....	Toledo, O.
City National Bank.....	Kansas City, Mo.	Philadelphia National Bank.....	Philadelphia, Pa.
Globe Indemnity Company.....	Newark, N. J.	Pittsburgh Home Saving & Loan Association.....	Pittsburgh, Pa.
Johns-Manville Company.....	Manville, N. J.	Mercantile Securities.....	Dallas, Texas
J. N. Adams Company.....	Buffalo, N. Y.	Utah Copper Company.....	Bingham, Utah
C. I. T. Building.....	New York, N. Y.	Hotel John Marshall.....	Richmond, Va.
New York Coliseum.....	New York, N. Y.	First National Bank.....	Roanoke, Va.
New York Life Insurance Co.....	New York, N. Y.	Winnebago County Court House.....	Oshkosh, Wisc.
Seagram Building.....	New York, N. Y.		

## GENERAL BRONZE CORPORATION

711 STEWART AVENUE

GARDEN CITY, L. I., N. Y.

For PERMATITE Window catalogue and list of representatives, see Section 17a/Ge

For Curtain Wall catalogue and list of representatives, see section 3a/Ge

For Architectural Metal catalogue, see Section 3a/Ge

Digitized by:



ASSOCIATION  
FOR  
PRESERVATION  
TECHNOLOGY,  
INTERNATIONAL  
[www.apti.org](http://www.apti.org)

BUILDING  
TECHNOLOGY  
HERITAGE  
LIBRARY

<https://archive.org/details/buildingtechnologyheritagelibrary>

From the collection of:

Carol J. Dyson, AIA