

## Lewis & Clark County 2003 Count of Persons by Age, Race, and Gender

School Age	White Alone		Black Alone		American Indian & Alaska Native Alone		Asian Alone & Native Hawaiian & Pacific Islander Alone		Two or More Races		Hispanic or Latino of any Race	
	Total	Female	Total	Female	Total	Female	Total	Female	Total	Female	Total	Female
5 to 9	3,311	1,618	20	7	89	37	20	13	97	43	89	48
10 to 14	3,728	1,828	12	7	105	54	18	11	83	46	87	42
15 to 19	4,158	2,103	11	6	102	53	30	15	95	54	94	48
20 to 24	3,648	1,758	13	4	85	47	29	14	62	33	93	53
<b>Total</b>	<b>14,845</b>	<b>7,307</b>	<b>56</b>	<b>24</b>	<b>381</b>	<b>191</b>	<b>97</b>	<b>53</b>	<b>337</b>	<b>176</b>	<b>363</b>	<b>191</b>

Working Age	White Alone		Black Alone		American Indian & Alaska Native Alone		Asian Alone & Native Hawaiian & Pacific Islander Alone		Two or More Races		Hispanic or Latino of any Race	
	Total	Female	Total	Female	Total	Female	Total	Female	Total	Female	Total	Female
15+	44,585	22,848	97	31	855	433	325	177	533	281	642	347
15-64	37,804	19,048	89	27	785	395	292	155	496	259	609	328
20+	40,427	20,745	86	25	753	380	295	162	438	227	548	299
20-64	33,646	16,945	78	21	683	342	262	140	401	205	515	280

Other Age Group	White Alone		Black Alone		American Indian & Alaska Native Alone		Asian Alone & Native Hawaiian & Pacific Islander Alone		Two or More Races		Hispanic or Latino of any Race	
	Total	Female	Total	Female	Total	Female	Total	Female	Total	Female	Total	Female
0 to 4	3,019	1,438	12	4	100	56	31	14	97	42	115	31
5 to 19	11,197	5,549	43	20	296	144	68	39	275	143	270	138
20 to 44	17,459	8,827	55	16	413	208	194	96	262	131	350	190
45 to 64	16,187	8,118	23	5	270	134	68	44	139	74	165	90
65+	6,781	3,800	8	4	70	38	33	22	37	22	33	19
<b>Total</b>	<b>54,643</b>	<b>27,732</b>	<b>141</b>	<b>49</b>	<b>1,149</b>	<b>580</b>	<b>394</b>	<b>215</b>	<b>810</b>	<b>412</b>	<b>933</b>	<b>468</b>

Source: U.S. Census Bureau, 2003 Population Estimates.  
Compiled by: Research & Analysis Bureau.

## Top 20 Private Employers in Lewis & Clark County Listed in Alphabetical Order

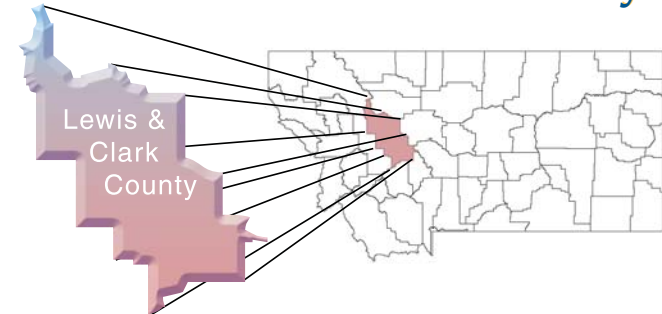
Albertson's	Federal Reserve Bank	Rocky Mountain Development Council
American Chemet Corporation	Helena Sand & Gravel	St. Peter's Hospital
Big Sky Care Center	Home Depot	Shodair
Blue Cross/Blue Shield	Independent Record	Student Assistance Foundation
Carroll College	McDonald's	Wal-Mart
Dick Anderson Construction	Mergenthaler Transfer & Storage	Watkins & Shepard
Dillard's	Qwest	

Source: Montana Department of Labor & Industry, Research & Analysis Bureau  
Third Quarter 2004 Unemployment Insurance Information. This list includes ONLY private industry employers subject to Unemployment Insurance. Railroads and city, county, state, and federal government agencies (including public school districts and universities) are excluded.

# MONTANA Department of Labor and Industry



## For Lewis & Clark County



### Cities and Towns in Lewis & Clark County

Augusta ■ Austin ■ Canyon Creek ■ Canyon Ferry  
Craig ■ East Helena ■ Fort Harrison ■ Helena  
Lincoln ■ Marysville ■ Rimini ■ Wolf Creek



For the most current county-by-county information, visit our website at  
[www.ourfactsyourfuture.org](http://www.ourfactsyourfuture.org)

June 2005



Located in western Montana, Lewis & Clark County is Montana's sixth most populous with 57,972 residents, according to the 2004 estimates produced by the U.S. Census Bureau. Helena, the county seat and state capital, is the state's sixth largest city with a population of 26,718, according to the 2003 estimates.

The 2003 Employment by Industry table on the inside shows government by far is the largest employer in Lewis & Clark County, providing nearly one out of three jobs. In Montana, about one-fourth of all state government employment is in Lewis & Clark County.

With Blue Cross Blue Shield headquarters in Helena, finance and insurance employment is greater than the statewide average. The professional and technical services sector is strong with the legal, engineering, and computer related services. While Lewis & Clark County has some manufacturing employment, it's not as concentrated as in some other Montana counties.

According to the U.S. Census Bureau, median income for Lewis & Clark County households in 2002 was \$39,330, compared to Montana's median income of \$34,105 for the same year. Median income is the average per household income in the county (no matter how many people live in the home); per capita income (inside table) is total income in the county divided by the number of people in the county.

According to the *Montana Almanac*, by authors Andrea Merrill and Judy Jacobson, the county was established in 1865, was one of the first nine territorial counties, and was originally named Edgerton County for the first territorial Governor Sidney Edgerton. The authors say Helena was named after Helena, Minnesota, by former resident of Minnesota John Somerville.

### Lewis & Clark County Population Source: U.S. Census Bureau

Area	7/1/2004	7/1/2003	7/1/2002	4/1/2000	4/1/1990	Percent	Percent	Percent	Percent	Percent
	Estimate	Estimate	Estimate	Census	Census	Change 2003-2004	Change 2002-2003	Change 2000-2004	Change 2000-2003	Change 1990-2000
Montana	926,865	917,621	910,372	902,195	799,065	1.0%	0.8%	2.7%	1.7%	12.9%
Lewis and Clark County	57,972	57,191	56,474	55,716	47,459	1.4%	1.3%	4.0%	2.6%	17.4%
East Helena	NA	1,682	1,647	1,642	1,538	NA	2.1%	NA	0.3%	6.8%
Helena	NA	26,718	26,330	25,780	24,346	NA	1.5%	NA	2.1%	5.9%

### 2000 Lewis & Clark County Commuters by Location

County of Residence	# Who Work in Lewis & Clark County	County of Work	# Who Live in Lewis & Clark County
Out of State	90	Out of State	209
Broadwater County	403	Broadwater County	78
Cascade County	155	Cascade County	158
Deer Lodge County	31	Dawson County	9
Fergus County	17	Flathead County	25
Flathead County	70	Gallatin County	34
Gallatin County	87	Jefferson County	441
Granite County	20	Lewis & Clark County	27,170
Jefferson County	2,256	Meagher County	13
Lewis & Clark County	27,170	Missoula County	88
Missoula County	68	Park County	10
Powell County	189	Powell County	33
Silver Bow County	102	Silver Bow County	38
Teton County	33	Teton County	34
Yellowstone County	38	Yellowstone County	35
Other Montana Counties	116	Other Montana Counties	36

Source: 2000 U.S. Census Bureau Data.

### Summary of Major Occupational Categories By Gender 2000 Census-Equal Employment Opportunity Data Employed Person 16 Years and Older-Lewis & Clark County

Occupation	Total	Male	Female
<b>Total</b>	28,651	14,555	14,096
<i>Management, professional, and related occupations:</i>	11,350	5,629	5,721
Management, business, and financial operations occupations:	4,852	2,668	2,184
Management, except farmers and farm managers	2,610	1,559	1,051
Farmers and farm managers	312	270	42
Business and financial operations occupations:	1,930	839	1,091
<i>Professional and related occupations:</i>	6,598	2,961	3,537
Education, training, and library occupations	1,509	382	1,127
Healthcare practitioners and technical occupations:	1,262	325	937
<i>Service occupations:</i>	4,217	1,856	2,361
Protective service occupations:	516	422	94
Food preparation and serving related occupations	1,626	801	825
Building and grounds cleaning and maintenance occupations	701	431	270
Personal care and service occupations	972	150	822
<i>Sales and office occupations:</i>	7,886	2,540	5,346
Sales and related occupations	2,883	1,473	1,410
Office and administrative support occupations	2,003	1,067	3,936
<i>Farming, fishing, and forestry occupations</i>	292	221	71
<i>Construction, extraction, and maintenance occupations:</i>	2,358	2,255	103
Construction and extraction occupations:	1,452	1,408	44
Installation, maintenance, and repair occupations	906	847	59
<i>Production, transportation, and material moving occupations:</i>	2,548	2,054	494
Production occupations	1,085	785	300
Motor vehicle operators	710	610	100
Material moving workers	588	497	91

Source: U.S. Census Bureau, Equal Employment Opportunity File, [www.census.gov/leo](http://www.census.gov/leo) 2001.

## Resources

### Census and Economic Information for Montana:

Census and Economic Information Center, Montana Department of Commerce, P. O. Box 200505, Helena, MT 59620-0505, 406-841-2740 or check out the Internet website at: <http://ceic.commerce.mt.gov/>

### Chambers of Commerce:

Helena Chamber, 225 Cruse Ave., Helena, MT 59601, 406-447-1530, <http://www.helenachamber.com/>  
Lincoln Valley Chamber, P. O. Box 985, Lincoln, MT 59639, 406-362-4949, <http://www.lincolnmontana.com/>

### Department of Labor and Industry:

#### Helena Job Service Workforce Center

715 Front St., P. O. Box 201505, Helena, MT 59620, 406-447-3200, <http://jsd.dli.mt.gov/local/helena/>  
Helena Unemployment Claims Telephone Center  
P. O. Box 201502, Helena, MT 59620-1502, 406-444-2545

### Economic Development:

Gateway Economic Development Corp., 225 Cruse Ave., Helena, MT 59601, 406-447-1510  
Governor's Office of Economic Development, State Capitol, Helena, MT 59620, 406-444-5634  
Montana Chamber of Commerce, P. O. Box 1730, Helena, MT 59624, 406-442-2405  
Montana Community Foundation, 101 N. Last Chance Gulch, Suite 211, Helena, MT 59601, 406-443-8313  
Montana Department of Agriculture, P. O. Box 200201, Helena, MT 59620-0201, 406-444-2402  
Montana Department of Commerce, Economic Development, 301 S. Park Ave., Helena, MT 59601, 406-841-2700  
U.S. Department of Commerce, Economic Development, P. O. Box 578, Helena, MT 59601, 406-449-5380

### Housing Costs:

Helena Association of Realtors, Multiple Listing Service, 1361 Elm St., Suite 5, Helena, MT 59601, 406-449-3835

### Internet:

Montana Workforce Services home page for job listings at <http://jsd.dli.mt.gov/>  
For information on the Internet about the cities and towns of Augusta, Canyon Creek, Craig, East Helena, Fort Harrison, Helena, Lincoln, Marysville, and Wolf Creek, go to <http://www.visitmt.com> and click on "cities and towns."

### Montana Motor Vehicle Division:

#### Drivers' Licensing

Helena-2708 Billings Ave. (behind Wal-Mart), 406-443-3680

### Newspapers:

*Helena Independent Record*, P. O. Box 4249, Helena, MT 59604, 406-447-4000, <http://www.helenair.com>  
*Queen City News*, 715 Getchell St., Helena, MT 59601, 406-443-3678, <http://www.queencitynews.com>  
*Blackfoot Valley Dispatch*, P. O. Box 427, Lincoln, MT 59639, 406-362-4975

### Public Libraries:

Lewis & Clark Library Augusta Branch, 205 Main Street, Augusta, MT 59410-0387, 406-562-3348  
Lewis & Clark Library East Valley Branch, 400 N. Kalispell, East Helena, MT 59635, 406-227-5750  
Lewis & Clark Public Library, 120 S. Last Chance Gulch, Helena, MT 59601-4133, 406-447-1690  
Lewis & Clark Library Lincoln Branch, 102 9<sup>th</sup> Ave. S., Lincoln, MT 59639, 406-362-4300

### Postsecondary Education Institutions:

#### Montana University System

The University of Montana Helena College of Technology, 1115 N. Roberts St., Helena, MT 59601, 406-444-6800 or 800-241-4882, <http://www.umhelena.edu/>

#### Independent College

Carroll College, 1601 N. Benton Ave., Helena, MT 59625, 406-447-4300, 800-992-3648, <http://www.carroll.edu>

### Lewis & Clark County Public Schools, Kindergarten through 12th Grade:

Auchard Creek Elementary, 9605 Highway 287, Wolf Creek, MT 59648-8637, 406-562-3528



## Montana Department of Labor & Industry's Research & Analysis Bureau



For information on employment by industry, new businesses, labor market information, job projections, and hourly pay by occupation, contact our office at:

P.O. Box 1728 Helena, MT 59624  
Phone: (406) 444-2430/Fax: (406) 444-2638 Toll Free: (800) 541-3904

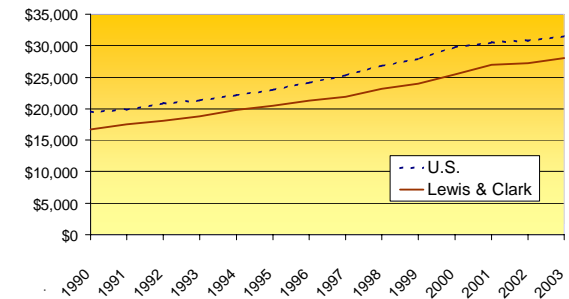
Or check out our website at:

[www.ourfactyourfuture.org](http://www.ourfactyourfuture.org)

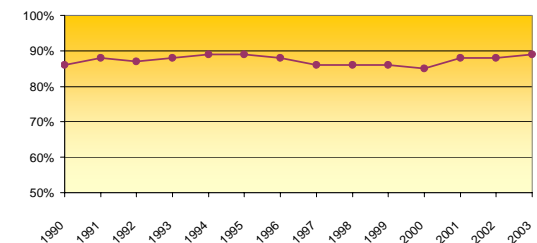
Be sure to check our location quotients for Lewis & Clark County on the website. Location quotients are a measure of the concentration of an industry's employment in Lewis & Clark County relative to the nation as a whole. A location quotient greater than 1 generally indicates that the industry is more concentrated in Lewis & Clark County than in the nation as a whole, while a location quotient less than 1 indicates it is less concentrated in Lewis & Clark County than in the nation as a whole.

## Lewis & Clark County Per Capita Personal Income

### Per Capita Personal Income



### Percent of National Average



Year	U.S.	Lewis & Clark County	% of National Average	Year	U.S.	Lewis & Clark County	% of National Average
2003	\$31,472	\$28,079	89%	1996	\$24,175	\$21,306	88%
2002	\$30,804	\$27,258	88%	1995	\$23,076	\$20,459	89%
2001	\$30,575	\$26,966	88%	1994	\$22,172	\$19,759	89%
2000	\$29,847	\$25,489	85%	1993	\$21,346	\$18,796	88%
1999	\$27,939	\$23,986	86%	1992	\$20,854	\$18,099	87%
1998	\$26,883	\$23,174	86%	1991	\$19,892	\$17,477	88%
1997	\$25,334	\$21,827	86%	1990	\$19,477	\$16,670	86%

Source: U.S. Department of Commerce, Bureau of Economic Analysis, Regional Economic Information System. Released September 2004.

Augusta Public Schools, P. O. Box 307, Augusta, MT 59410, 406-562-3384  
 Craig Elementary, 375 Augusta St., Craig, MT 59648-8738, 406-235-4239  
 East Helena Elementary, P. O. Box 1280, East Helena, MT 59635, 406-227-7700  
 Helena Public Schools, 55 S. Rodney, Helena, MT 59601-5763, 406-324-2001  
 Lincoln K-12 Schools, P. O. Box 39, Lincoln, MT 59639, 406-362-4201  
 Trinity Elementary, P. O. Box 523, Canyon Creek, MT 59633, 406-325-4374  
 Wolf Creek Elementary, c/o B J Young, P. O. Box 200, Wolf Creek, MT 59648, 406-235-4374

## Lewis & Clark County Annual Average Labor Force

Year	Civilian Labor Force		Unemployment	
	Labor Force	Employed	Unemployed	Rate
2004	28,163	27,072	1,091	3.9%
2003	28,327	27,287	1,040	3.7%
2002	27,946	26,778	1,168	4.2%
2001	28,005	26,872	1,178	4.2%
2000	28,205	27,048	1,157	4.1%

Source: These estimates are provisional estimates produced by the U.S. Department of Labor's, Bureau of Labor Statistics, and will be revised further in 2005.

## Lewis & Clark County Farms and Ranches

Total Farms and Ranches	635
Oilseed & Grain Farming	32
Vegetable & Melon Farming	3
Fruit & Tree Nut Farming	0
Greenhouse, Nursery & Floriculture Production	14
Sugar Beets, Hay & All Other Crops	200
Beef Cattle Ranching & Farming	178
Cattle Feedlots	8
Dairy Cattle & Milk Production	2
Hog & Pig Farming	5
Poultry & Egg Production	7
Sheep & Goat Farming	17
Animal Aquaculture & Other Animal Production	169

Source: USDA, National Agricultural Statistics Service, 2002 Census of Agriculture.

## Lewis & Clark County Employment by Industry\* Annual Averages 2003

Industry	# of Establishments	Average Annual Employment	Annual Wages Paid	Industry	# of Establishments	Average Annual Employment	Annual Wages Paid
<b>TOTAL ALL INDUSTRIES</b>	<b>2,399</b>	<b>29,704</b>	<b>\$898,396,149</b>	<b>TRANSPORTATION &amp; WAREHOUSING</b>	<b>44</b>	<b>658</b>	<b>\$18,447,189</b>
<b>TOTAL PRIVATE</b>	<b>2,263</b>	<b>20,803</b>	<b>\$539,731,740</b>	Air Transportation	3	31	\$796,008
<b>AGRICULTURE, FORESTRY, FISHING &amp; HUNTING</b>	<b>34</b>	<b>165</b>	<b>\$3,064,903</b>	Truck Transportation	18	335	\$11,870,267
Crop Production	5	47	\$662,662	Transit & Ground Passenger Transport	4	112	\$1,426,990
Animal Production	12	80	\$1,638,415	Support Activities for Transportation	9	68	\$1,539,891
Forestry & Logging	7	18	\$422,016	<b>INFORMATION</b>	<b>51</b>	<b>765</b>	<b>\$28,803,785</b>
Agriculture & Forestry Support	10	20	\$341,810	Publishing Industries, Except Internet	12	206	\$7,050,391
<b>UTILITIES</b>	<b>7</b>	<b>86</b>	<b>\$5,458,305</b>	Broadcasting, Except Internet	6	70	\$2,445,740
<b>CONSTRUCTION</b>	<b>267</b>	<b>1,247</b>	<b>\$39,969,721</b>	Telecommunications	17	286	\$13,516,305
Construction of Buildings	81	468	\$15,595,257	ISPs*, Search Portals & Data Processing	12	157	\$4,657,971
Heavy & Civil Engineering Construction	20	72	\$2,550,398	<b>FINANCE &amp; INSURANCE</b>	<b>141</b>	<b>1,752</b>	<b>\$72,872,309</b>
Specialty Trade Contractors	166	707	\$21,824,066	Credit Intermediation & Related Activities	51	668	\$22,935,000
<b>MANUFACTURING</b>	<b>63</b>	<b>600</b>	<b>\$18,564,104</b>	Securities, Commodities, Contracts, Investments	22	50	\$3,553,653
Food Manufacturing	7	102	\$1,870,859	Insurance Carriers & Related Activities	66	890	\$40,756,018
Beverage & Tobacco Product Manufacturing	4	14	\$114,882	<b>REAL ESTATE &amp; RENTAL &amp; LEASING</b>	<b>105</b>	<b>378</b>	<b>\$6,095,927</b>
Wood Product Manufacturing	6	59	\$1,938,677	Real Estate	87	260	\$4,500,454
Printing & Related Support Activities	3	50	\$1,355,292	Rental & Leasing Services	18	117	\$1,595,473
Nonmetallic Mineral Product Manufacturing	4	43	\$1,759,054	<b>PROFESSIONAL &amp; TECHNICAL SERVICES</b>	<b>272</b>	<b>1,485</b>	<b>\$65,554,804</b>
Fabricated Metal Product Manufacturing	5	17	\$325,493	<b>ADMINISTRATIVE &amp; WASTE SERVICES</b>	<b>113</b>	<b>842</b>	<b>\$16,453,954</b>
Furniture & Related Product Manufacturing	8	23	\$486,950	Administrative & Support Services	108	816	\$15,647,377
Miscellaneous Manufacturing	9	63	\$1,465,502	Waste Management & Remediation Services	5	26	\$806,577
<b>WHOLESALE TRADE</b>	<b>70</b>	<b>566</b>	<b>\$18,730,524</b>	<b>PRIVATE EDUCATIONAL SERVICES</b>	<b>29</b>	<b>402</b>	<b>\$9,591,822</b>
Merchant Wholesalers, Durable Goods	39	237	\$8,872,306	<b>PRIVATE HEALTH CARE &amp; SOCIAL ASSISTANCE</b>	<b>226</b>	<b>3,238</b>	<b>\$89,646,658</b>
Merchant Wholesalers, Nondurable Goods	23	306	\$9,127,005	Ambulatory Health Care Services	140	947	\$35,095,523
Electronic Markets & Agents & Brokers	8	23	\$731,213	Social Assistance	64	695	\$9,980,299
<b>RETAIL TRADE</b>	<b>297</b>	<b>3,578</b>	<b>\$72,861,473</b>	<b>ARTS, ENTERTAINMENT &amp; RECREATION</b>	<b>66</b>	<b>651</b>	<b>\$6,970,899</b>
Motor Vehicle & Parts Dealers	45	482	\$16,309,767	Amusements, Gambling & Recreation	49	577	\$5,907,321
Furniture & Home Furnishings Stores	23	127	\$3,221,670	<b>ACCOMMODATION &amp; FOOD SERVICES</b>	<b>196</b>	<b>2,751</b>	<b>\$26,790,114</b>
Electronics & Appliance Stores	25	127	\$2,324,488	Accommodation	33	446	\$5,639,634
Building Material & Garden Supply Stores	26	273	\$7,107,751	Food Services & Drinking Places	162	2,304	\$21,150,480
Food & Beverage Stores	25	499	\$9,496,644	<b>OTHER SERVICES</b>	<b>273</b>	<b>1,556</b>	<b>\$37,875,715</b>
Health & Personal Care Stores	10	119	\$1,924,985	Repair & Maintenance	71	268	\$5,959,861
Gasoline Stations	25	183	\$2,615,928	Personal & Laundry Services	26	141	\$1,749,630
Clothing & Clothing Accessories Stores	24	106	\$1,332,121	Membership Associations & Organizations	158	1,128	\$29,897,769
Sporting Good, Hobby, Book & Music Stores	26	249	\$3,134,784	Private Households	19	20	\$268,455
General Merchandise Stores	13	1,003	\$17,022,289	<b>TOTAL GOVERNMENT</b>	<b>136</b>	<b>8,901</b>	<b>\$358,664,409</b>
Miscellaneous Store Retailers	46	305	\$5,046,869	Local Government	43	2,179	\$71,533,048
Nonstore Retailers	11	106	\$3,324,177	State Government	35	5,199	\$197,353,287
				Federal Government	58	1,524	\$89,778,074

\*Internet Service Providers

Source: Montana Department of Labor and Industry, Research and Analysis Bureau. (Totals may not add due to nondisclosure of confidential industry data or to rounding.) \*This data is based on the Quarterly Census of Employment and Wages (QCEW) series which compiles data reported by all employers covered under Montana unemployment insurance.